

For metered flow of any fluid

- From **HPLC** (High Performance Liquid Chromatography) to **high flow rate**
- **High viscosity** fluid, **explosion-proof** specification
- **High durability** and **simple** structure **easy** for maintenance

Choice of types according to the application.

**Pump only**  
(requires control unit)

**Integrated with Control Unit**

**Stable**  
even at  
**low**  
flow rate

**Easy**  
maintenance

Standard max.  
high pressure  
to **40** MPa

## High Performance · High Pressure Multi-purpose Plunger Pump L.TEX9800 series

Dual head plunger pump for high pressure pumping up to 40 MPa as standard.

Available in a wide range of models with maximum flow rates from 10 mL/min to 1,000 mL/min, you can choose the flow rate that best suits your needs, from low flow rates for research and experimental applications to high flow rates for mass production.

In addition to standard specifications, we offer a wide range of options and can accommodate special specifications such as high viscosity fluids, high temperature fluids, slurry liquids, and supercritical fluids.

Please contact us with your desired flow rate, operating pressure, and fluid.

High Performance · High Pressure  
Multi-Purpose Plunger Pump  
**L.TEX**



# Product features

The line-up includes 12 models with maximum flow rates from 10 mL/min to 1,000 mL/min. A wide range of fluids can be pumped, including high temperature fluids, low temperature fluids, high viscosity fluids and supercritical fluids as options. The system is also available with high pressure than standard specifications, a plunger cleaning function, and explosion-proof specification. In addition to the basic control functions, the liquid quantitative feeder system can be customized with optional function of your choice.

■ For a wide range of fluids and specifications

High Temp.

Low Temp.

High viscosity

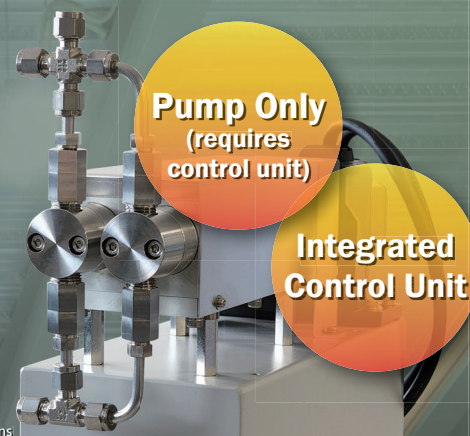
High pressure

Cleaning function

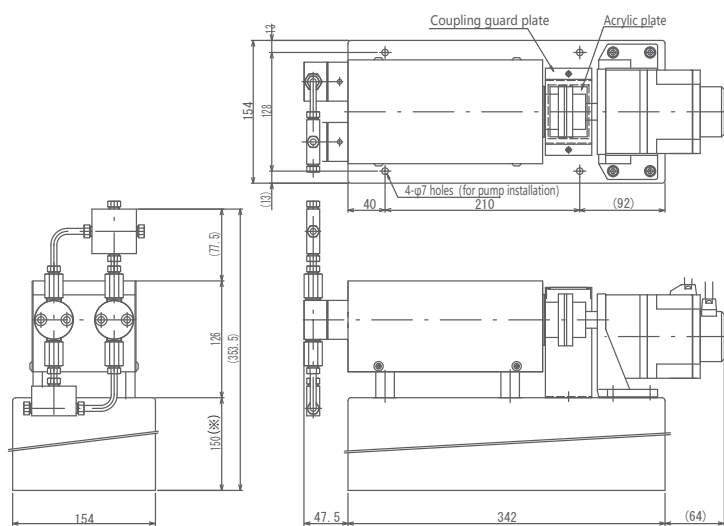
Explosion protection

CO<sub>2</sub>\*  
(liquefied carbon dioxide gas)

\* Compatible with KHK examinations



## Outline Dimension ◆ L.TEX9822N (Stand-alone Pump : built-in)



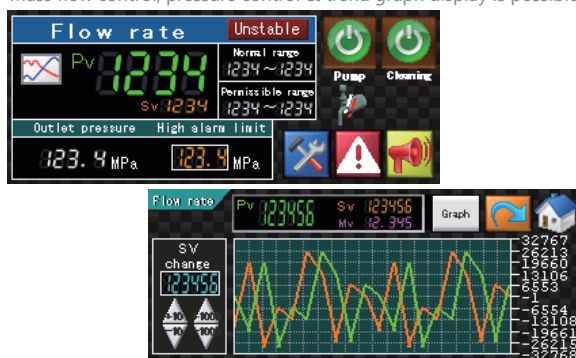
※Base pump height can choose between 20mm~150mm

## Integrated Control Unit

Basic Control function  
 • Constant volume feed control / pressure control  
 • Program operation  
 • Cumulative liquid volume  
 • Accumulated operating time

Control Optional  
 • Mass flow control  
 • Wireless connection  
 • Logging  
 • External control operation (Modbus)

▼ Example configuration with color touch panel operation screen. Mass flow control, pressure control & trend graph display is possible.



## Basic specifications (Stand-alone Pump: built-in L.TEX9800N series)

Model Specification	L.TEX9803N	L.TEX9810N	L.TEX9820N	L.TEX9821N	L.TEX9822N	L.TEX9823N
Liquid supply method	Dual head plunger pump with cam rotor					
Liquid supply mode	Constant feed supply					
Flow rate range	0.2~10.0mL/min	0.5~20.0mL/min	0.5~30.0mL/min	0.5~40.0mL/min	0.7~50.0mL/min	1.0~70.0mL/min
Flow accuracy	F.S.±1%以内					
Max. Operating Pressure	40MPa		35MPa			
Piping Outer Dimension	1/16", 1/8", 1/4"					
Main Connection Material	SUS316					
Power Supply	AC100V or 200V 50/60Hz					
Motor Power	60W					120W
Operating Temp. Range	-10~50℃ ※Please contact us if the requirement temp. is higher or lower than operating temp. range					

Model Specification	L.TEX9830N	L.TEX9831N	L.TEX9832N	L.TEX9842N	L.TEX9843N	L.TEX9850N
Liquid supply method	Dual head plunger pump with cam rotor					
Liquid supply mode	Constant feed supply					
Flow rate range	1.4~100.0mL/min	2.0~150.0mL/min	3.0~200.0mL/min	5.0~300.0mL/min	7.0~500.0mL/min	15.0~1000.0mL/min
Flow accuracy	F.S.±1%以内					
Max. Operating Pressure	35MPa		25MPa	20MPa		10MPa
Piping Outer Dimension	1/8", 1/4", 3/8"					
Main Connection Material	SUS316					
Power Supply	AC100V or 200V 50/60Hz					
Motor Power	120W		200W			
Operating Temp. Range	-10~50℃ ※Please contact us if the requirement temp. is higher or lower than operating temp. range					

※Product specification are subject to change without notice ※Performance values are based on room temperature 20℃ and ethanol use.

